

# ST. STEPHEN SCROLL

*St. Stephen Lutheran Church is a community of believers, saved by the grace of God, who are called to:*

- *share his love through words and actions;*
- *welcome others into the family of Christ.*

Dear Brothers and Sisters in Christ,

*Grace to you and peace from God our Father and from our Lord and Savior Jesus Christ.*

December is here and with the arrival of December our hearts and minds turn to Christmas.

Our Christian community will be making the most of this wonderful time of year. We will begin our Christmas celebrations during Sunday school on December 7<sup>th</sup> when all of our classes will decorate our Christmas tree in the Fellowship Hall. The Golden Sneakers have a wonderful Christmas party planned for Wednesday, December 10<sup>th</sup> at Science Hill. The ladies of Saint Stephen are invited to the annual ladies' Christmas luncheon on Saturday, December 13<sup>th</sup> at 1:00 pm. Our children will dazzle us with their incredible talents as they share the Good News of God's love, grace, and mercy with us on Sunday, December 14<sup>th</sup> during our 10:00 am worship service. There will be Christmas caroling and gatherings to decorate our church for this most blessed of seasons. Best of all, we will celebrate Jesus' birth by worshipping together on Christmas Eve at both 5:00 pm and 11:00 pm.

One special way we celebrate Advent and Christmas at Saint Stephen is by lighting our Advent wreath during worship each week. I thought I would share with you the meaning of this symbol.

Advent wreaths are traditionally made of evergreen branches which signify eternal life. Laurel signifies victory over persecution and suffering. Pine and yew branches symbolize immortality. Cedar signifies strength and healing. Holly's prickly leaves remind us of the crown of thorns Jesus wore when he was crucified. The pinecones, nuts, and seedpods used to decorate an Advent wreath symbolize resurrection.

The circle of our Advent wreath, which has no beginning or end, symbolizes the eternity of God, and the everlasting life found in Jesus Christ.

The four candles represent the four weeks of Advent. The progressive lighting of the candles symbolizes the expectation and hope surrounding our Lord's first coming into the world and the anticipation of his promised return.

The light of the candles reminds us that Jesus is the light of the world who comes into the darkness of our lives to bring life and hope. It also reminds us that we are called to be a light to the world as we reflect the light of God's grace and love to others.

Altogether, Advent wreaths point to the everlasting life promised to us through Jesus.

I wish you all a blessed Advent and a truly Merry Christmas.

In Christ –  
*Pastor Kerri*



St. Stephen  
Lutheran Church  
5903 Bardstown Rd.  
Fern Creek, KY 40291

502-239-7778

Email:  
pastorkerri  
@gmail.com

**Pastor Kerri M.  
McFarland  
Pastor Emeritus,  
Thomas D. Swasko**

*St. Stephen Lutheran Church  
is a member of the  
Indiana-Kentucky Synod of  
the Evangelical Lutheran  
Church in America.*

## 2014 Council Members

**Brenda Firquin,**  
President  
**Buddy Zimmerman,**  
Vice President  
**Cheryl Markley,**  
Council Secretary  
**Rod Firquin,**  
Rec. Secretary (non-voting)  
**Larry Faue,**  
**Andrea Goebel,**  
**Paul Kiser**  
**Connie Miller,**  
**Rita Sarson,**  
**Bill Thompson**  
**Bill Wise,**  
Financial Secretary  
**Buddy Zimmerman,**  
Treasurer  
**Hank Evans,**  
Pianist/Organist  
**Kim Thonen,**  
Custodian  
**Cheryl Markley,**  
Office Secretary  
secretary.ststephen  
@gmail.com

*Check out the website!  
ststephen-louisville.com*

Fourth Sunday in Advent, December 21st: No Sunday school  
Christmas Eve, Tuesday, December 24th: 5:00 pm—Candlelight Holy Communion  
(Family Worship Service)  
11:00 pm—Candlelight Holy Communion  
(Traditional Worship Service)

Christmas Day, Thursday, December 25th: No worship service  
First Sunday After Christmas, Dec. 28th: No Sunday school  
Second Sunday After Christmas, Jan. 4th: No Sunday school



### New Member Sunday

New member Sunday is **December 7th**. We will be welcoming 10 new members to the St. Stephen family: **Julie, Caroline, Lucy, and Ruby Kate Zimmerman; Erin Zimmerman; Mary, Avery, & Jaelyn Kokladas; Jan Wilkins; and Ron Danner**. Please plan to attend worship services on this date to welcome these new members. Also, we congratulate Ron Danner and Linda Martin who will be getting married at St. Stephen on December 6th, the day before.

# WELCOME

### Join the Golden Sneakers to Dine at Science Hill Inn!

On **Wednesday, December 10th**, the Golden Sneakers will meet at church at 10:15 am to carpool to Science Hill Inn at 525 Washington Street, Shelbyville, KY 40065. We will dine at 11:15 am and then enjoy a Yankee Gift Swap together. **Please bring a gift worth approximately \$10.** After the gift swap, feel free to browse the galleries of Wakefield-Scearce. Please sign up in the narthex. Questions? Call Judy Kiser, cell 954-790-4443 or home 502-964-2700.

### Annual St. Stephen Ladies Luncheon Tea

At **1:00 pm on Saturday, December 13th**, all mothers, daughters, sisters and friends are invited to enjoy a fabulous luncheon tea provided by the Fellowship Committee and then enjoy a fun opportunity to make a Christmas ornament. If you plan to come, please sign up in the narthex so that we will know approximately how many people are coming. Come enjoy the fellowship!

### Sunday School Christmas Program

The annual Sunday school Christmas program will be held in place of the sermon **during the morning worship service on Sunday, December 14th**. It is entitled "A Christmas to Believe In". Please plan to come and enjoy this joyous St. Stephen Christmas tradition.

### 4th Qtr Special Ministries Collection

On **Sundays, December 7th & 14th**, our 4th quarter special collections will be taken for social ministries. 50% of the money collected will be sent to Fern Creek Highview United Ministries, and 50% will be kept for other social ministry needs.

We are holding fundraisers to send our youth to **Youth Quake in Cincinnati on January 9th-11th, 2015.**



We are now in the middle of the **poinsettia sale**. These beautiful plants are \$10.00 each. The first round of poinsettias sold in November will be delivered to the church and can be picked up on December 5th. The second round of poinsettia orders are due by December 19th. They will be delivered to the church a couple of days before Christmas Eve, where they will be used to decorate the sanctuary. For Christmas Eve, you may designate the poinsettias in honor or memory of your loved ones. If you order poinsettias in the second round, you may pick up your plant(s) after the 11:00 pm worship service on Christmas Eve or after.

Order forms are available in the narthex. You may turn in your order with payment to Andrea Goebel or place it in the offering plate.

After the morning worship service and Christmas program on **Sunday, December 14th**, the youth invite you to a **taco lunch fundraiser** in the fellowship hall. Look for information in the bulletins and announcements.



### Youth Going Caroling

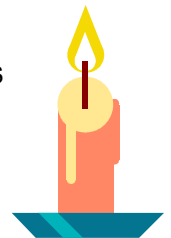
Join the St. Stephen Youth as they sing Christmas carols to our shut-ins **following the 10:00 am service on December 21st**. Paul Kiser will lead this outing. Don't forget to sign up on the bulletin board next to Pastor Kerri's office if you plan to attend and if you can provide transportation. All ages from 4th grade through the Golden Sneakers are welcome. A pizza lunch will be provided. If you want carolers to visit you, or if you know someone who would like a visit from our carolers on that date, please contact Paul Kiser, 491-0106. We will do our best to carol to as many of the people who request as we are able.

### 2015 Sanctuary Flowers and Candle Donors

Sign-up sheets for 2015 sanctuary flower and candle donors are in the narthex in the Flower and Candle binder. We ask that the donation be \$20.00 for flowers and \$2.00 for the sanctuary candle. Please take this opportunity to honor or memorialize your loved ones in

2015. We need to have the flowers and candles donated as many weeks as possible so that we can continue to provide them.

Thank you for your care and generosity.



### Youth Serve Wayside Christian Mission



On November 21st, the St. Stephen youth group went to Wayside Christian Mission (Hotel Louisville) to serve dinner and meet with the residents and staff. Then, they stayed over night and served breakfast in the morning. In conjunction with this trip, Thrivent donated \$500 which the youth group used to purchase supplies for the shelter.



The Fern Creek/High-view United Ministries, FCHUM, is continuing to ask for everyone's help to make their annual Holiday Cheer program a success. You are invited help us Gather God's Gifts to share with others. This month, we hope to make **at least 7 Holiday Cheer Christmas baskets** for needy families in our community. Holiday Cheer baskets contain everything a family needs to prepare their Christmas dinner. These baskets will be distributed by the Fern Creek/Highview United ministries just before Christmas.

There are Christmas ornaments in the narthex with food items printed on them. Please take an ornament or several and purchase the items listed on them. We need to have all of the food items returned to the church **no later than Sunday, December 14<sup>th</sup>**. Working together we can be a blessing to our neighbors in need this Christmas. If you wish to assemble an entire basket yourself, the following items are needed for each Christmas basket:

- stuffing mix
- 1-5 lb. pound of potatoes (**don't bring till close to deadline**)
- 1-3 lb. bag of onions (**don't bring till close to deadline**)
- 2-cans of cranberry sauce
- 3 to 5- cans of green vegetables (green beans, peas...)
- 3 to 5 cans of mixed vegetables ( corn, yams...)
- 1 to 2 cans of pie filling
- 1 bag of flour and 1 bag of sugar
- \$15-\$20 gift certificate to buy meat/perishable items



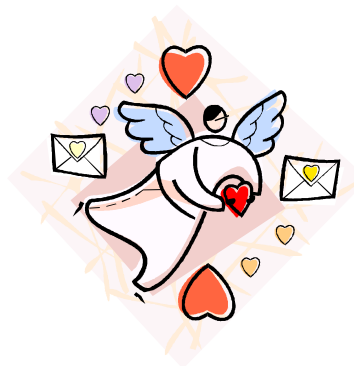
Thank you to all who donated Thanksgiving baskets or items for baskets for FCHUM in November. Weight Watchers also gave 112.2 pounds of food to St. Stephen for these baskets through their Lose a Pound, Give a Pound Program. Altogether, St. Stephen was able to give **9 baskets to FCHUM for Thanksgiving!** Our goal was 6 baskets! Thank you again for your generosity!

### **Sharing Christmas Cards With Fellow St. Stephen Members**

Beginning Sunday November 30th, file folders will be located in the narthex for members to share Christmas cards and Holiday greetings with other St. Stephen families. Each file folder will be labeled with a family name. Please remember our shut-in members and reach out to folks you haven't seen in church in a while. Check your folder weekly, and if you see members who live close to you or relations of yours that haven't been in church for a while, please consider taking their cards to them.

The folders will be in the Narthex until Sunday, January 10th.

Yours in Christ,  
*Rita Sarson*



The schedule below shows the remaining decorating tasks for the Christmas holiday. Please consider joining us as we enjoy the beauty of the Christmas decorations. The next phase of decorating will take place as follows:

Decorating of the Fellowship Hall tree will be the responsibility of the Sunday School team on December 7th.

**Lights on all trees will be turned on for services the 4<sup>th</sup> weekend of Advent, Dec 21**

**After the 4<sup>th</sup> Week of Advent:**

The following decorations will be added following the 10 am service on December 21:

**ALL MEMBERS ARE ENCOURAGED TO PARTICIPATE**

- add greenery decorations including hanging /draping garland (along sides of sanctuary) possibly with smaller, shorter swag (not to interfere with new side banners)
- Chrismons on the large Chrismon tree in the sanctuary
- Christmas ornaments/balls on the trees in the chancel
- Change bows from blue to red and paraments from blue to white
- Stained glass window decorations in rear of Sanctuary (interior Narthex/Sanctuary windows), white pillars,
- additional candles and greenery for window sills
- nativity figures
- poinsettias

**Dates to remember:**

December 21 – Decorate for Christmas following the 10 am service

January 11, 2015 – Celebration of Epiphany (January 6, 2015) – decorated trees will remain in place until after the 5 pm service.

Week of January 5 – 9, 2015 – Take down all decorations except the large glass star. (January 6 @ 6:30 pm - W&M)

Week of February 9 - 13, 2015 – Remove large glass star prior to the 10 am service on February 15 (Transfiguration of Our Lord is February 15, 2015)

### **“Adopt” a Chrismon**

The Christmas tree in the sanctuary will be decorated again this year with the Chrismons made by women of St. Stephen last year. Last year, we launched a program to encourage St. Stephen member families to adopt a Chrismon to help defray the cost of these beautiful decorations. Many are still awaiting adoption. Each Chrismon is unique, yet all share the common theme of being representative of Jesus Christ. **The cost is \$10 per Chrismon.** You may choose to adopt one in honor or in memory of someone special, if you desire. A picture of each Chrismon will be available, along with a card designating if this is in honor or memory of someone. You will be given this picture to share, if you wish, with that person or someone in their family. There is a clipboard on the table in the narthex with a list of those Chrismons awaiting “adoption”. Please help.

### **Christmas Eve Worship Servers Needed**

St. Stephen needs worship servers for the Christmas Eve worship services. If you can help, please sign up in the narthex on the sign up sheet for the job that you would like to do at the worship service you will attend. We need worship coordinators, ushers, greeters, communion table servers, deacons, and acolytes.

# ~~Fern Creek/Highview United Ministries~~

## Needs You!

**Volunteer opportunities are open  
in the following programs:**

**Meals On Wheels (MOW):**

**Meal packer assistance on Wednesdays**

**Volunteer coordinator**

**Adult Day Center (ADC):**

**Activity assistance: Monday mornings & afternoons,  
Tuesday afternoons, Wednesday mornings,  
Thursday mornings & afternoons,  
Friday mornings.**

**Lunch assistance: certain Fridays.**

**Crafts assistance: once or twice a month**

**Musical entertainment: once a month**

**Individual & Family Assistance Center (IFAC):**

**Food pantry assistance: Tuesdays & Thursdays**

**Food pick up: various days from local stores**

**Dare To Care delivery day assistance: 2<sup>nd</sup> Wednesdays**

**Produce delivery: every Thursday morning**

**General:**

**Cleaning, yardwork, groundskeeping, sidewalk snow  
removal.**

**For more information contact**

**[execdir@fchum.org](mailto:execdir@fchum.org) or call 762-9608.**



## 2015 Offering Envelope Boxes Available

The 2015 offering envelope boxes are now available in the narthex. Please take the box with your name on it. If you do not see your name, please call the church office, 239-7778, so that we can give you a box and record the number. If you are not able to come to church and would like a box, please call the church office or send a note to [secretary.ststephen@gmail.com](mailto:secretary.ststephen@gmail.com).

As was done in this past year, we included a monthly mortgage fund envelope for each month to make it easy for you to contribute to the mortgage fund. If you would rather contribute to the mortgage fund more frequently, there are still mortgage fund envelopes in the pew racks. Thanks for your continued contributions.

## St. Stephen's Annual Thanksgiving Dinner

Year after year, Barry and Marilyn Mills and Buddy and Peggy Zimmerman have coordinated and provided a large portion of the Thanksgiving dinner at St. Stephen along with help from the fellowship committee. This year, Karen Davis and Judy Kiser also helped make turkeys for the celebration. Many people enjoyed the results of their efforts along with the potato dishes, dressings, and desserts provided by the congregation. Special thanks to the Mills, Zimmermans, Karen Davis, Judy Kiser and the fellowship committee for this scrumptious meal!



## Property & Grounds Thanks & Status

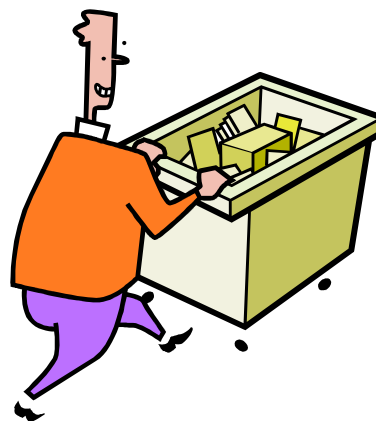
Thanks to all the grass cutters, stick gatherers, and flower bed caretakers for a successful yard work season. We made it through the season without a major equipment breakdown. The snow blade is now on, so the grass can rest for a few months.

*Rod Firquin*, Property & Grounds Chair



## Operation Christmas Child

For the annual Operation Christmas Child shoebox collection, St. Stephen had a goal of 60 boxes. Well, we shattered that goal with a **total of 73 boxes!** We have not had a total that high since 2006. Thank you to all of the generous members who donated boxes and materials. You will be making Christmas a little brighter for many children around the world!



**Budget Workshop Meeting****November 9, 2014**

Congregation members were invited to attend a council and finance committee budget workshop on Sunday, November 9, 2014 following the 10:00 AM service. Approximately 45 members were in attendance. A light lunch was provided by the council members.

Paul Kiser presented the survey information. Approximately 40 surveys were returned and of those 35 were correctly completed so the information could be tabulated. The top ten areas identified as priorities (#1 being highest priority) for the church were tabulated as follows: **1.** Church staff-72 pts, **2.** Christian education – 61 pts, **3.** Fixed costs- 50 pts, **4.** Social Ministry-33 pts, **5.** Upkeep-31 pts, **6.** Worship materials- 20 pts, **7.** Stewardship programming- 18 pts, **8.** Youth group activities- 16 pts. **9.** Benevolence- 15 pts., **10.** Evangelism- 15 pts. Those in attendance discussed the information and made comments concerning what that information should mean to the finance committee and church council.

Pat Markley discussed the current financial status of the church. As presented in the congregation update on church finances on September 21, the financial situation is sound. The congregation responded to the alert of slumped giving through the first quarter of 2014. The usual summer dip in giving was not as profound this year as in past years. It was obvious to the council and finance committee, members heard and understood the need for continued financial support throughout the summer months.

Members in attendance discussed 2014 budget and spending information through October of this year. The current budget compared to giving is on target to match. The only area that has shown a decrease in giving is the mortgage fund. Giving to that fund has been significantly less than in 2013. That decrease has been offset slightly by memorial giving designated for that budget item. It is surmised members diverted mortgage giving to regular operational giving. The mortgage fund is less at this point than what it was in January of 2014. Questions concerning spending in the benevolence line of the budget were discussed. At this time we have not met the budgeted amount to the ELCA. Questions concerning what benefits and support member churches receive from the ELCA were answered by Pr. McFarland. The church's support of FCHUM was discussed and suggestions offered about collections and in kind giving by members.

In summary, the members present at the meeting suggested the finance committee consider a slight stretch of the overall bottom line budget for 2015. The additional allocations should be not only to meet our current budgeted amount but to increase our giving to the ELCA and local ministry. This stretch would send the message the local church supports the work of the "larger" church in our community and throughout the world. There was also a suggestion the congregation look at a date in the near future to pay off the mortgage for the new sanctuary and remodel. We celebrated 7 years in the facility this fall. The nearly \$900,000.00 construction cost of the building has been paid down to just over \$150,000.00 in those 7 years. It was suggested a 10 year anniversary would be a good time to celebrate a mortgage burning. The finance committee and council will discuss this challenge further and bring ideas to the congregation at a future time. It was also proposed another congregation, council, and finance committee workshop be held in early January to discuss the proposed budget. At that time, a budget will be presented and discussion would occur so members would be able to have input into the final 2015 budget. The Finance committee will present to the council in February, for recommendation to the congregation, a final budget which would then need approval at the annual congregational meeting in late February, 2015.

The meeting was adjourned with singing of the doxology.



The council met on this date instead of the second Sunday of the month, due to the budget workshop held on November 9. Council members agreed to meet to discuss only the proposed budget at this meeting.

The meeting was called to order by the council president, Brenda Firquin at 11:35 AM. Pastor McFarland offered prayer. Member present: B. Firquin, C. Markley, C. Miller, A. Goebel, L. Faue, B. Zimmerman, B. Thompson, R. Sarson, K. Markley, Pr. McFarland, R. Firquin (recording secretary)

The minutes of the October 12 meeting were printed in the November newsletter. M/S L. Faue/B. Zimmerman to accept as printed. Carried.

Pastor McFarland reported the new member Sunday will be December 7. Quite a few new members will be welcomed at the 10:00 AM service.

#### Financial Reports:

- Treasurer's Report. (see report printed at the end of these minutes) M/S-P; Kiser/B. Thompson to accept as presented. Carried.
- Pat Markley presented a first draft of the 2015 budget for the council's discussion. Included in the proposal was a flat salary line. The only increases to the budget include increased spending on the health benefit package for Pastor McFarland, increases in utilities budget due to expected increases of gas and electric rates, expected increases of insurance rates, and responses to the suggestions from the budget workshop. Benevolence giving to the ELCA was increased as suggested. Financial, as well as in-kind support of FCHUM, was discussed, and the council made suggestions to the finance committee in this area. Support of the ELCA South Central Conference was discussed as well as support for youth activities.
- The following dates are proposed to continue the discussion of the 2015 budget prior to presentation at the annual meeting in late February 2015:

December 7- council meeting

January 11- congregation budget workshop following the 10:00 AM service

January 18- council meeting – to discuss input from the congregation and recommend changes to the proposed budget

February 8- council meeting - final review of the budget - vote by council to recommend budget to congregation at the annual meeting

February 22 - annual congregational meeting - following the 10:00 AM service.

M/S-L. Faue/C. Miller to accept the dates noted above to continue the budget discussion and approval. Carried.

M/S- P. Kiser/B. Zimmerman to adjourn. Carried.

#### Treasurer's Report:

<b>October 2014</b>	<b>Republic checking</b>	<b>memorial</b>	<b>social min.</b>	<b>mortgage fund</b>	<b>mission plus</b>	<b>property annex</b>
Beginning balance	2,345.87	2,687.12	667.19	6,759.27	4,280.62	8,752.06
Deposits	12,709.91			660.00		
Disbursements	11,841.55		60.00	1,076.00		
Interest					2.86**	
<b>Ending balance</b>	<b>3,214.23</b>	<b>2,687.12</b>	<b>607.19</b>	<b>6,343.27</b>	<b>4,283.48</b>	<b>8,752.06*</b>

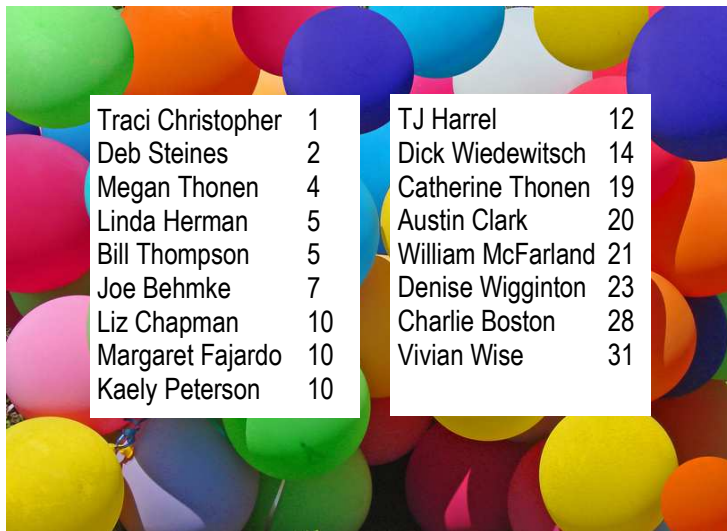
\*the bank statement on this account has not been received as of printing.

\*\* interest for September and October

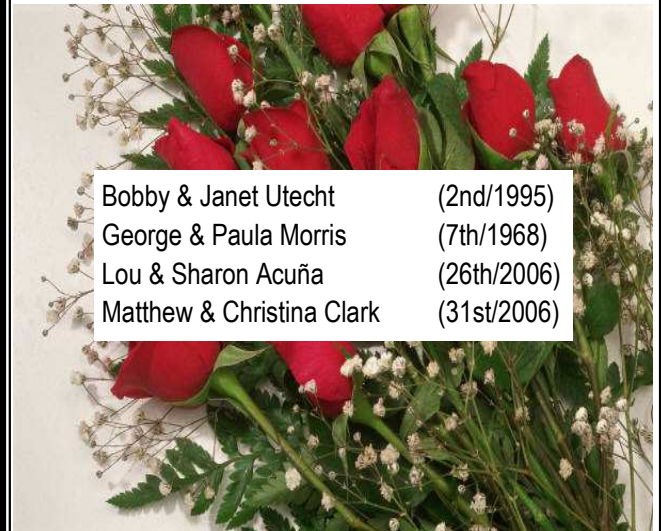
The current mortgage is \$153,192.15.

**December 2014 Servants of the Church**

Sunday - 10 a.m.	12/07/14	12/14/14	12/21/14	12/28/14	1/04/15
<b>Lector</b>	Pat Markley	Steven Sarson	Ellen Ullom	Rod Firquin	Fred McBride
<b>Ushers</b>	Pat Markley Ellen Ullom	Fred McBride Frank Constantino	Rod Firquin Adolphus Kahn	Jim Brotzge B. Zimmerman	Tom Curtis Mikayla Curtis
<b>Acolyte</b>	Ella Markley/ Kayeigh Kiser	Lucy Zimmerman/ Rachel Utecht	Ellerie Seifert	Bailey Goebel	Ethan Constantino
<b>Communion Table</b>	Andrea Goebel Bailey Goebel	Sean Morris Reagan Morris	Michelle Sarson Deb Steines	Steven Sarson Rita Sarson	Adolphus Kahn Kaitlyn Kiser
<b>Commun. Deacon</b>	Cheryl Markley	Tammy Utey	Steven Sarson	Rod Firquin	Kenna Markley
<b>Nursery</b>	Needed	Wendi Morris	Jennifer Kiser	Connie Miller	Cheryl Markley
<b>Cantor</b>	Fred McBride	Bill Wise	Paul Kiser	Fred McBride	Bill Wise
<b>Worship Coord.</b>	Pat Markley	Rita Sarson	Rod Firquin	Brenda Firquin	Paul Kiser
<b>Greeter(s)</b>	Darlene Clark	Rod Firquin	Bill & Vivian Wise	Frank Constantino	Karen Eisenbrey
<b>Coffee Hr Host(s)</b>	Deb Steines	Youth Taco Lunch	McFarlands	See you in Jan.!	Needed

**God's Blessings to these December birthdays:**


Traci Christopher	1	TJ Harrel	12
Deb Steines	2	Dick Wiedewitsch	14
Megan Thonen	4	Catherine Thonen	19
Linda Herman	5	Austin Clark	20
Bill Thompson	5	William McFarland	21
Joe Behmke	7	Denise Wigginton	23
Liz Chapman	10	Charlie Boston	28
Margaret Fajardo	10	Vivian Wise	31
Kaely Peterson	10		

**We celebrate with these couples having December anniversaries:**


Bobby & Janet Utecht	(2nd/1995)
George & Paula Morris	(7th/1968)
Lou & Sharon Acuña	(26th/2006)
Matthew & Christina Clark	(31st/2006)

**November Sanctuary Flower and Candle Donors****November Sanctuary Flower Donors**

- 2nd** - the Mills and Morris families in honor of Sean Morris' birthday  
**9th** - Judy & Fred McBride in honor of their wedding anniversary  
**16th** - Linda Martin in memory of Gordon Martin and Harold & Ruth Pifer  
**23rd** - Jessica, Danielle, & Michelle (Sarson) in honor of their parents wedding anniversary

\*The cost to provide altar flowers is \$20.00.

**November Sanctuary Candle Donors**

- 2nd** - Elaine Peterson in honor of Meredyth Peterson's birthday  
**9th** - Linda Martin in memory of Gordon Martin and Harold & Ruth Pifer  
**16th** - Deb & Duane Steines in memory of Joyce Whitney  
**23rd** - Elaine Peterson in honor of Cole Summers' birthday

\*The cost to provide the sanctuary candle is \$2.00.



# December 2014



Sun	Mon	Tue	Wed	Thu	Fri	Sat
	<i>1</i>	<i>2</i> 9:00 - 2:00— Fairview Homemakers 12:30—Prayer Shawl Group 6:30—Christian Education Committee	<i>3</i> 10:00—Ladies Bible Study  6:30—Choir Rehearsal	<i>4</i>	<i>5</i> 1st Poinsettia Pick-Up Date 6:30— Martin/ Danner Rehearsal Dinner	<i>6</i> 8:30— Weight Watchers  6:30— Martin/ Danner Wedding
<i>7</i> Social Ministry Collection, New Member Sunday  9:00—Education Hr 10:00—Holy Communion, 11:30—Coffee Hr 11:30—Fellowship Committee 11:30—Council 5:00—Holy Communion	<i>8</i>	<i>9</i> 9:00 - 2:00— Fairview Homemakers	<i>10</i> 6:30—Choir Rehearsal 10:15—Golden Sneakers Carpool to Science Hill	<i>11</i>	<i>12</i>	<i>13</i> 8:30— Weight Watchers  1:00— Ladies Luncheon Tea
<i>14</i> Social Ministry Collection 9:00—Education Hr 10:00—Holy Communion, Christmas Program 11:30—Youth Taco Lunch 5:00—Holy Communion	<i>15</i>	<i>16</i> 9:00 - 2:00— Fairview Homemakers  6:00—Finance Committee	<i>17</i> 6:30—Choir Rehearsal	<i>18</i>	<i>19</i> 2nd Set of Poinsettia Orders Due	<i>20</i> 8:30— Weight Watchers  Noon— Amber Buehner
<i>21</i> No Sunday School 10:00—Holy Communion 11:30—Coffee Hr 11:30—Youth Caroling 11:30—Decorate St. Stephen for Christmas 5:00—Holy Communion  	<i>22</i>	<i>23</i> 9:00 - 2:00— Fairview Homemakers  4:30—Ronald McDonald House Visit	<i>24</i> 5:00— Candlelight Holy Communion 11:00— Candlelight Holy Communion	<i>25</i> Christmas  	<i>26</i>	<i>27</i> 8:30— Weight Watchers  Noon— Nicole Emberg Brian's Party
<i>28</i> No Sunday School 10:00—Holy Communion 5:00—Holy Communion	<i>29</i>	<i>30</i> 9:00 - 2:00— Fairview Homemakers	<i>31</i> 6:30—Choir Rehearsal	<div style="border: 1px solid black; padding: 5px;"> <p><b>Upcoming Events:</b>  <b>January 9th - 11th</b>—Youth Quake  <b>February 22</b>—Annual Meeting</p> </div>		

St. Stephen Lutheran Church  
 5903 Bardstown Road  
 Fern Creek, Kentucky 40291



*Worship Services:*  
*Education Hr (during school yr) 9:00 AM*  
*Sunday 10:00 AM*  
*Sunday 5:00 PM*

Due date for next month's newsletter articles is always the 17th of the month before. Send to:  
[secretary.ststephen@gmail.com](mailto:secretary.ststephen@gmail.com)

# December 2014



<b>January 2015 Servants of the Church</b>					
<b>Sunday - 10 a.m.</b>	<b>1/04/15</b>	<b>1/11/15</b>	<b>1/18/15</b>	<b>1/25/15</b>	<b>2/01/15</b>
<b>Lector</b>	Fred McBride	Judy McBride	Karen Davis	Sean Morris	Elizabeth Seifert
<b>Ushers</b>	Tom Curtis Mikayla Curtis	Steven Sarson Rita Sarson	Marcus Utley Adam Utley	Kenna Markley Bailey Goebel	Barry Mills Pat Markley
<b>Acolyte</b>	Ethan Constantino	Jacob Curtis	Emily Goebel	Emma Morris	Reagan Morris
<b>Communion Table</b>	Adolphus Kahn Kaitlyn Kiser	Michelle Sarson Wendi Morris	Steven Sarson Rita Sarson	Deb Steines Buddy Zimmerman	Paul Kiser Kayleigh Kiser
<b>Commun. Deacon</b>	Kenna Markley	Cheryl Markley	Tammy Utley	Steven Sarson	Kenna Markley
<b>Nursery</b>	Cheryl Markley	Elizabeth Seifert	Jessica Allen	Julie Zimmerman	Wendi Morris
<b>Cantor</b>	Bill Wise	Paul Kiser	Fred McBride	Bill Wise	Paul Kiser
<b>Worship Coord.</b>	Paul Kiser	Pat Markley	Rita Sarson	Rod Firquin	Brenda Firquin
<b>Greeter(s)</b>	Karen Eisenbrey	Carolyn Graham	Jay Tyson	Ellen Ullom	Marilyn Mills
<b>Coffee Hr Host(s)</b>	Needed	Needed	Needed	Needed	Needed

